



Waverley School

Learning through diversity

Options booklet

Year 9

2026



Humanity, **E**quality, **A**spiration, **R**espect

Letter from the Principal

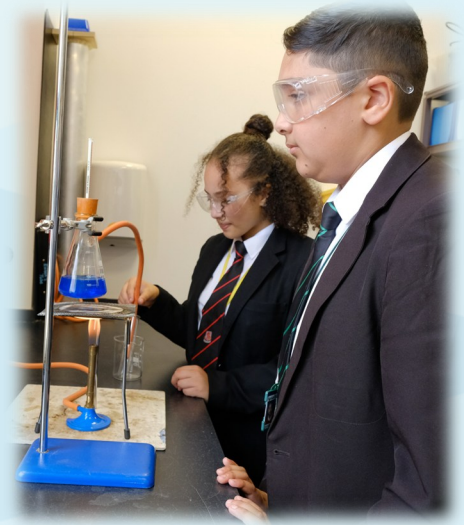


Dear Parents and Carers,

It's time to look very closely at the next steps in education for our Year 9 students. This is an important choice for your child and we know that you will want to support them to make the right decisions for their future. This booklet will explain how the options process works and what decisions need to be made by which dates.

We have three pathways students can follow: **A, B and C**. Pathways are personalised for our students, ensuring that all learners can have access to a broad and exciting curriculum. We place great emphasis on learners have access to the **E-Bacc**, an important collection of courses that will broaden the opportunities for your child. You can read more about the e-bacc on page 4.

Mr Nandra and Mr Wray are working hard to ensure that our students are prepared for the choices that they make. We would really appreciate you discussing the possible choices with your child and supporting them with the decisions that they make.



We look forward to welcoming you to our Year 9 Parents Evening/Options Evening on **Wednesday 11th February** where you can discuss your child's options with subject teachers and other staff will be available to support you with any questions you may have.

A message for our Year 9 Students

Welcome to a significant moment in your education. The options process is a time of great possibility, of tough decisions, and of self-reflection. The latter is the most crucial – take the time to identify what you really want from your education – and treat these choices with care. Get them right, and they can go a long way to unlocking your academic potential and to ensuring you enjoy lessons and thrive at Waverley School. Within your options, consider what you might need for your future.

Yours sincerely,

Mr H Derry

Principal

Waverley School: Secondary & Sixth Form

Humanity, Equality, Aspiration, Respect

Letter from your Head of Year



Dear Pupils in Year 9,

I would like to say how privileged I am to be your Head of Year. I understand the pressures that you will be facing as you start your GCSE's, and I want you all to know this:

You are not alone. Myself, your form tutors, and all the staff at Waverley School, are here to help you, support you, encourage you and challenge you to achieve your full potential.

You have the opportunity over the coming weeks to make some decisions about your subject choices for GCSE. To make the right choices for you; think about where your passions are, what interests you and what you are good at. Making good and educated choices now for yourself will help create a successful pathway to careers that inspire and challenge you, and open you up to a world of opportunities.

Talk to your parents/carers, talk to your teachers, form tutors and staff in school; we all have your best interests at heart and want you to make the right choices for your future.

I look forward to helping and supporting you all over the coming years, and for you all to make the most of your time here at Waverley School.

Mr W. Wray
Head of Year 9
Waverley School: Secondary & Sixth Form

**Life presents many choices,
the choices we make
determine our future.**



Humanity, Equality, Aspiration, Respect

How do options work?

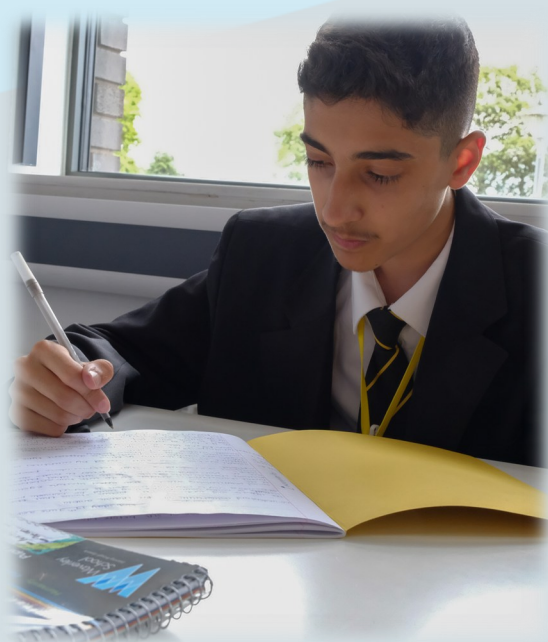


All students at Waverley School will study English, Maths, and Science. **Most** students will also study a Humanities subject (History or Geography) **and** a Modern Foreign Language.

There are three groups of students in our school:

A	B	C
<p>The vast majority of our students are following the A stream. They will complete the E-Bacc* during their time at Waverley School.</p> <p>Pupils in the A stream will be able to choose from:</p> <ul style="list-style-type: none"> • History or Geography • 1 optional subject 	<p>A smaller proportion of students will follow the B stream wherein they will complete an alternative selection of courses that are designed to support them to achieve excellent outcomes.</p> <p>Pupils in the B stream will be able to choose:</p> <ul style="list-style-type: none"> • History or Geography • 2 optional subjects 	<p>A small number of our students will be guided on their courses in Year 10 and Year 11 that are best suited to meet their learning needs.</p> <p>Pupils in the C stream will discuss their options with their form tutor and/or the SENDCO (Ms Alexander).</p>

The group you are in will be marked clearly on your **options form**.



*What is the E-Bacc?

The E-Bacc is made up of subjects which are considered essential to many courses at higher education level. Studies have shown that pupils who study the E-Bacc have greater opportunities in further education and increases the likelihood that pupils will stay on in full-time education after they finish school age. Furthermore, pupils who study the E-Bacc are likely to improve their performance in English and Maths.

The subjects studied in the E-Bacc are: English, Maths, Science, Geography **or** History, **and** a language.

I'm in the 'B' stream, can I still study the E-Bacc?

Yes! Just make sure you choose to add a language to one of your options when you complete your form.

How to complete your options form.



A	B	C
<p>You will study:</p> <p>English Maths Science (Triple or Combined) Religious Education PE (core only) French, Spanish, or Urdu</p> <p>You must choose:</p> <p>History or Geography One additional subject</p>	<p>You will study:</p> <p>English Maths Science (Combined) Religious Education PE (core only)</p> <p>You must choose:</p> <p>History or Geography Two additional subjects (which may include a language)</p>	<p>You may study:</p> <p>English Maths Science (Combined) Religious Education PE (core only) Art & Design Health & Social Care Digital IT</p> <p>The Option Choices for Pathway C are yet to be confirmed</p>

The form is titled 'Options Year 9 - Pathway A' and includes fields for Student Forename, Student Surname, Student Admission No., and Reg. Group. It lists mandatory subjects: English, Maths, Triple Science, R.E, P.E, MFL. Option 1 asks to choose between GCSE History and GCSE Geography. Option 2 asks to rank three subjects in preference order. A list of available subjects includes GCSE Art & Design, GCSE Computer Science, GCSE Drama, GCSE Sociology, GCSE Textiles, BTEC Enterprise (Vocational), BTEC Health & Social Care (Vocational), BTEC Digital IT (Vocational), OCR Sports Studies (Vocational), and EDUQAS Performing Arts (Music). The form also has sections for Student Signature, Parent or Carer's Signature, Date, and Office use only.

Tick the box to choose History **or** Geography.

Double check that your details are correct at the top of the form.

Indicate your **first, second, and third** choice of your subject.

Make sure you and your parents/ carers sign the form.

Please note that applications for options will not be accepted unless three preferences are

Reasons to choose a subject



Good reasons to choose a subject:

“I enjoy it”

“I am good at it.”

“It is relevant to a University course, Apprenticeship, or career that interests me.”

“I would like a new experience”.

“I’m not sure what I want to do in the future; this subject will help me to keep my options open”

“It is a challenging subject. I like a challenge.”

“It is a subject I would like to get better at; I’m ready to work hard to improve”



Poor reasons to pick a subject:

“I like the teacher” - they may not be your teacher for the course. You’re more likely to be successful if you have a good relationship with all of your teachers.

“My friends are doing it” - you might not enjoy the subject and you could lose motivation to study hard. Studying something you like will help you to get to know even more people.

“It sounds easy!” - no course is easy! Don’t pick a subject that doesn’t motivate you to work hard.

“I’m in a rush and didn’t research the other options.” - make sure you take the time to find the options that you enjoy to avoid any regrets.

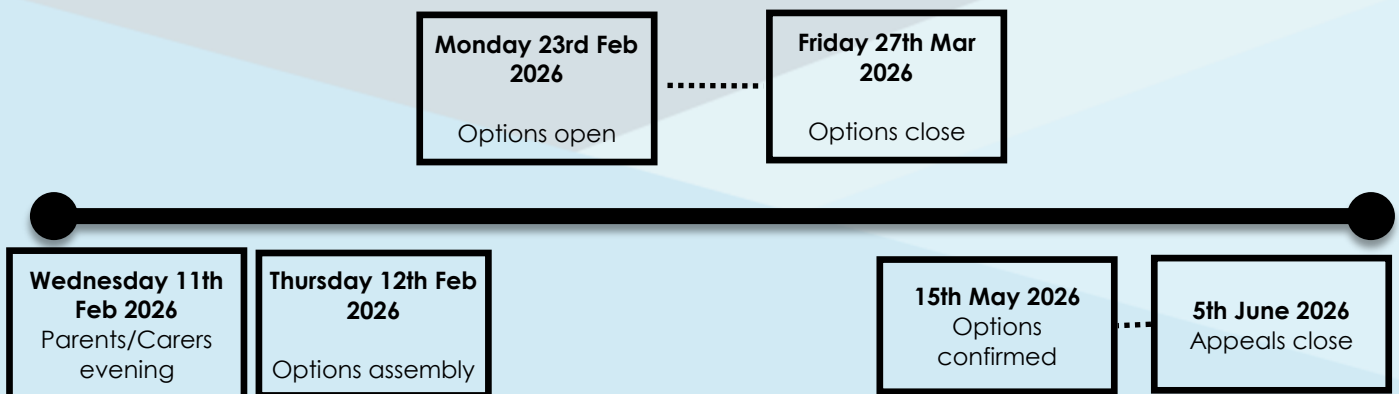


Humanity, Equality, Aspiration, Respect

Important notices and deadlines...



The timeline below shows the deadlines for each stage of the options process. Please note that options requests received after the closure date may not be accepted. Students who do not submit options requests will be placed on a first-come-first served basis for any available spaces remaining on courses.



Waverley School does not guarantee that pupils will be assigned to a chosen course.

Pupils will be assigned to courses on a first-come-first served basis, adhering to the following order of priority:

1. Pupil's first choice (spaces permitting);
2. Pupil's second choice (spaces permitting);
3. Pupil's third choice (spaces permitting).
4. Should there be no available spaces for any of the three choices, pupils and parents/carers will be notified and provided with a selection of alternative courses.

Waverley School will publish an appeals process for parents/carers to follow should they be dissatisfied with their child's given options. This appeals process will conclude on the 5th June 2026

Waverley School reserves the right to amend the availability of courses to students at both Key Stage 4 and Key Stage 5 without notice.

Should you have any questions concerning the options selection process, then please contact the school by e-mail at enquiry@waverley.bham.sch.uk.

Subject list



Mandatory subjects which **all** pupils at Waverley School study.

9	English Language & Literature	A, B, C
10	Science (Combined)	A, B, C
11	Science—Biology (Triple)	A
12	Science—Chemistry (Triple)	A
13	Science—Physics (Triple)	A
14	Mathematics	A, B, C
15	Religious Education	A, B, C

Humanities subjects

16	History, or	A, B
17	Geography	A, B

Languages subjects

18	French, or	A, B (optional)
19	Spanish, or	A, B (optional)
20	Urdu	A, B (optional)

Optional subjects

21	Art & Design	A (optional), B (optional), C
22	Photography	A (optional), B (optional)
23	Business Studies	A (optional), B (optional)
24	Computer Science	A (optional), B (optional)
25	Digital Information Technology	A (optional), B (optional), C
26	Drama	A (optional), B (optional), C
27	Health & Social Care	A (optional), B (optional)
28	Performing Arts (Music)	A (optional), B (optional)
29	Sociology	A (optional), B (optional)
30	Sports Studies	A (optional), B (optional)
31	Textiles	A (optional), B (optional)
32	Psychology	A (optional), B (optional)
33	Child Development	A (optional), B (optional)



English Language (GCSE) and English Literature (GCSE)

AQA

Ms Begum

English Language

Paper 1 - Explorations in creative reading and writing.
Analysis of a fictional extract by identifying language and structural features.
Students will also be expected to develop their descriptive writing skills.

Paper 2 - Writers' viewpoints and perspectives.
Analysis and comparison of two non-fiction extracts.
Students will develop their skills in writing to argue, explain and persuade.

English Literature

Paper 1 - Shakespeare and the 19th-century novel.
Students will complete extract based analysis tasks with references to the text as a whole.

Paper 2 - Modern texts and poetry.
Students will be study poems from the 'Power and Conflict' cluster.



How will I be assessed?

The exam board will grade you using GCSE 9-1

English Language:

Component 1: written examination, 1 hr 45 minutes, 50%

Component 2: written examination, 1 hr 45 minutes, 50%

English Literature:

Component 1: written examination, 1 hr 30 minutes, 40%

Component 2: written examination, 2 hrs 15 minutes, 60%

Great results!

Why you should study this course:

Our subject is the cornerstone for effective learning. Children who are competent readers, who can analyse text, and appreciate the nuances of literary techniques will find that they can access their learning across of all of their subjects.

This is a mandatory subject for all post-16 courses and a core requirement for Waverley School.

Careers from this subject:

Education, Journalism, Publishing.

What can you study next: A-Level English Language and Literature

Can I study this subject at **Waverley Sixth Form**?

Yes you can! We offer English Literature at A-Level.



Combined Science (Double award) (GCSE)

Edexcel

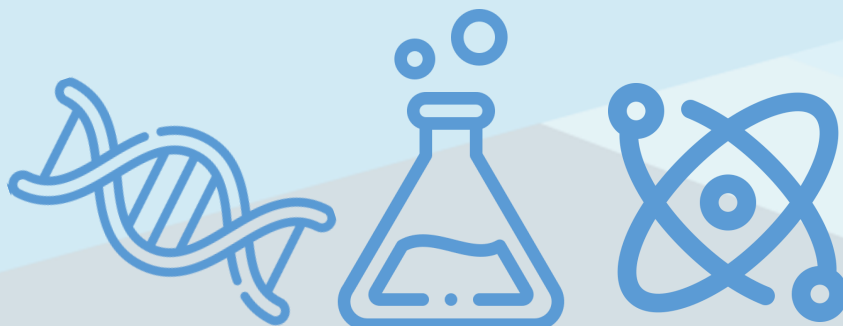
Mr Emmanuel

Topic list

The topic areas studied in the new GCSE Combined Science syllabus are the same as for the separate sciences, although with a little less content.

These are detailed on each of the separate science pages (see **Biology, Chemistry, and Physics**).

Both Higher and Foundation tier papers will be available.



How will I be assessed?

The exam board will grade you using GCSE 9-1

There are 6 examination papers in total

Paper 1 and Paper 2 –

- Biology,
- Chemistry and
- Physics.

Each will assess different topics.

Each paper is a 1 hour 15 minute written examination, to include multiple choice, structured closed short answer and open response questions.

Each paper is worth 16.7% of the overall mark.

Why you should study this course:

In GCSE combined science: Biology, Chemistry and Physics are taught as a double Science. This course is worth two GCSE grades in total. All students study this core subject (unless they study separate Sciences).

Careers from this subject:

Biotechnology, Biological Testing, Dentistry, Environmental Conservation, Forensic Science Independent Research, Medicine, Midwifery, Marine Biology, Nursing, Physiotherapy, Sports Science, Teaching, Veterinary Medicine.

What can you study next: A-Level Biology/Chemistry/Physics

Can I study this subject at **Waverley Sixth Form?**

Yes you can! We offer Biology, Chemistry, and Physics at A-level



Biology (Triple) (GCSE)

Edexcel

Mr Emmanuel

Topic list

There are 9 topic areas that are studied in the new GCSE Biology syllabus:

Key Concepts in Biology.

1. Cell Types.
2. Cells and Control.
3. Genetics.
4. Natural Selection and Genetic Modification.
5. Health, Disease and the Development of Medicines.
6. Plant Structures and their Functions.
7. Animal Coordination, Control and Homeostasis.
8. Exchange and Transport in Animals.
9. Ecosystems and Material Cycles



How will I be assessed?

The exam board will grade you using GCSE 9-1

There is a **written examination** 1hr 45 minutes (100 marks).

Part of the
Triple Science
suite!

Why you should study this course:

Biology is at the forefront of many of the most important and exciting current issues, whether it is the effect of global warming and environmental degradation on the planet's flora and fauna; our continuing fight against disease and pathogens; the search for novel life-forms on earth—and elsewhere—and indeed what “alive” means.

Careers from this subject:

Biotechnology, Biological Testing, Dentistry, Environmental Conservation, Forensic Science, Independent Research, Medicine, Midwifery, Marine Biology, Nursing, Physiotherapy, Sports Science, Teaching, Veterinary Medicine.

What can you study next: A-Level Biology, BTEC Applied Science

Can I study this subject at **Waverley Sixth Form?**

Yes you can! We offer Biology A-Level

Chemistry (Triple) (GCSE)

Edexcel

Mr Emmanuel



Topic list

Topic 1 – States of matter
 Topic 2 – Methods of Separating & Purifying substances,
 Topic 3-4 – Atomic structure and The Periodic table
 Topic 4 – Extracting metals and equilibria
 Topic 5-7 – Ionic Bonding, Covalent Bonding, Types of Substance,
 Topic 8 – Acid and Alkalis,
 Topic 9 – Calculation Involving Masses,
 Topic 10 - 13 – Electrolytic Processes, Obtaining and Using Metals,
 Reversible Reactions and Equilibria, Transition Metals, Alloys and Corrosion,
 Topic 12 – 16 – Quantitative Analysis, Dynamic Equilibria, Calculations
 Involving Volumes of Gases, Chemical Cells and Fuel Cells
 Topic 17 – 19 – Groups in the Periodic Table, Rates of Reaction, Heat
 Energy Changes in Chemical Reactions,
 Topic 20 – 21 – Fuels, Earth and Atmospheric Science
 Topic 22 - 24 – Hydrocarbons, Alcohols and Carboxylic Acids, Polymers,
 Topic 25 – 26 – Qualitative Analysis: Tests for Ions, Bulk and Surface
 Properties of Matter Including Nanoparticles.

Chemistry is often referred to as 'the central science' because of its links to aspects of Biology during the study of organic chemistry and Physics, particularly through the 'rate and extent of chemical change' and 'atomic structure' components.

How will I be assessed?

The exam board will grade you using GCSE 9-1.

Paper 1 and **Paper 2** (50% each paper) and each paper is a 1 hour 45 minute written examination, to include multiple choice, structured closed short answer and open response questions.

Part of the
Triple Science
suite!

Why you should study this course:

Studying Chemistry can be an extremely rewarding and exciting experience. Taking Chemistry will allow you to establish the links between the three sciences and it will also improve your knowledge and understanding of the substances that surround us, from raw materials to medicines. In essence, chemistry is the study of everything around us.

What can you study next: A-Level chemistry

Careers from this subject:

Analytical Chemist, Chemical Engineer, Healthcare Scientist, Clinical Biochemistry, Forensic Scientist, Nanotechnologist, Pharmacologist, Research Scientist (physical sciences) and Toxicologist.

Can I study this subject at **Waverley Sixth Form**?

Yes you can! We offer A-Level Chemistry



Physics (Triple) (GCSE)

Edexcel

Mr Emmanuel

Topic list

Topic 1 – Motion,
 Topic 2 – Motion and forces,
 Topic 3 – Conservation of energy,
 Topic 4 – Waves,
 Topic 5 – Light and the electromagnetic spectrum,
 Topic 6 – Radioactivity
 Topic 7 – Astronomy
 Topic 8 – Energy - Forces doing work,
 Topic 9 – Forces and their effects,
 Topic 10 – Electricity and circuits,
 Topic 11 – Static Electricity
 Topic 12 – Magnetism and the motor effect,
 Topic 13 – Electromagnetic induction,
 Topic 14 – Particle model,
 Topic 15 – Forces and matter

Part of the
Triple Science
suite!

The specification is designed to give students the skills and concepts they need to be able to construct a scientific approach to solving problems and understanding the world around them. Students will also learn to ask and answer questions about the fundamental laws that govern all natural phenomena.

How will I be assessed?

The exam board will grade you using GCSE 9-1

Paper 1: (50% of GCSE)

Paper 2: (50% of GCSE)

Each paper is a 1 hour 45 minute written examination, to include multiple choice, structured closed short answer and open response question



Why you should study this course:

Students are likely to be engaged by the aspects of the specification that they can relate to their everyday life such as forces and motion, electricity and electro-magnetic waves, as well as larger concepts like nuclear fission and fusion and evidence of the Big Bang.

Careers from this subject:

Accountant, Air Traffic Controller, Astronaut, Banker, Barrister, Civil Servant, Computer Programmer, Defense Specialist, Engineer, Geologist, Musical instrument designer, Pilot, Physicist, Politician, Lawyer, Meteorologist, Stockbroker, Teacher and almost any other career.

What can you study next: A-Level Physics

Can I study this course at **Waverley Sixth Form?**

Yes you can! We offer Physics at A-Level



Mathematics (GCSE)

Edexcel

Mrs Kaur



Topic list

GCSE Mathematics covers a wide range of basic mathematical knowledge and skills grouped into five areas.

- Number
- Algebra
- Ratio, Proportion and rates of change.
- Geometry and measures
- Statistics and probability

During Year 10 and 11 pupils will build on the work covered during Key Stage 3.

Pupils will be expected to:

- Use and apply standard techniques, recalling facts and formulae, and using them in multi-stage problems.
- Reason, interpret and communicate mathematically by presenting reasoned, logical proofs and drawing conclusions.
- Solve problems in various mathematical and other contexts

GCSE mathematics enables students to reason mathematically by following a line of enquiry, conjecturing relationships and generalisations, and developing an argument, justification or proof using mathematical language.

The curriculum will allow students to solve problems by applying their mathematics to a variety of routine and non-routine problems with increasing sophistication, including breaking down problems into a series of simpler steps and persevering in seeking solutions.

How will I be assessed?

The exam board will grade you using GCSE 9-1

GCSE Mathematics has a Foundation tier (grades 1 – 5) and a Higher tier (grades 4 – 9).

Students must take three question papers at the same tier.

All question papers must be taken in the same exam series .

Each paper is worth 80 marks and is 1 hour 30 minutes long. Paper 1 is non-calculator and papers 2 and 3 are calculator.

There is no coursework in Maths GCSE.

Mandatory course

Why you should study this course:

GCSE mathematics is an essential qualification for progression into all areas of further study and many careers. Having a sound grounding in mathematical skills is seen as important for us all. Many of the skills are important life skills, including working with money and having a logical approach to problem solving.

Some people just enjoy the challenge!

What can you study next: Physics, Chemistry, Biology, Mathematics,

Careers from this subject:

Being a competent mathematician could lead to a career in: accounting, medicine, engineering, forensic pathology, finance, business, consultancy, teaching, IT, games development, scientific research, programming, the civil service, design, construction and astrophysics to name a few.

Can I study this course at **Waverley Sixth Form?**

Yes you can! We offer Mathematics at A-Level.

Religious Education (GCSE)

AQA

Mx Hindson



Topic list

Students will study a range of fun and exciting topics such as:
Islamic Beliefs (Tawhid, Angels, Predestination, Holy Books, Prophethood and Judgement day)
Islamic Practices (Shahadah, Salah, Sawm, Zakkah, Hajj, Festivals, Ashura, Jihad)
Christianity Beliefs (God, Trinity, Creation, Incarnation, Crucifixion, Resurrection, Ascension)
Christianity Practices (Worship, Pilgrimage, Baptism, Holy communion, Christmas and Easter)

Theme A Relationships and Families (marriage, divorce, homosexuality, gender equality)

Theme B Religion and Life (abortion, euthanasia, animal testing, stewardship, creation)

Theme D Religion, Peace and Conflict (Just War, Nuclear weapons, Holy War, Jihad, Pacifism)

Theme E Religion, Crime and Punishment (The Death Penalty, treatment of criminals, forgiveness).

Religious Education is a mandatory subject at Waverley School. Religious Education enables pupils to flourish individually within their communities and as citizens in a pluralistic society and global community.



How will I be assessed?

The exam board will grade you using GCSE 9-1

Paper 1 (Study of Religions), 1 hr 45 mins.

This paper assess Islamic and Christian Beliefs and Practices

Paper 2 (Thematic Studies), 1hr, 45 mins.

This papers assess Islamic and Christian attitudes towards ethical issues in society.

Mandatory course

Why you should study this course:

Religious Education has an important role in preparing pupils for adult life, employment and lifelong learning. It enables pupils to develop respect for and sensitivity to others, in particular those whose faiths and beliefs are different from their own. It promotes discernment and enables pupils to combat prejudice. Students who study R.E at A-level also demonstrate good communication skills and the ability to think logically.

What can you study next: Religious Education, Philosophy, Ethics

Careers from this subject:

Students who study GCSE RE often go onto study A-level courses in R.E. and other subjects. Many universities, colleges and future employers often consider R.E. as a Facilitator Subject. This means that universities, colleges and future employers value R.E. as an important subject because of the skills it teaches individuals.

Can I study this course at **Waverley Sixth Form?**

Yes you can! We offer Religious Education at A-Level





History (GCSE)

AQA

Mr Barron

Topic list

Paper 1 Thematic study and Historic environment

Medicine in Britain 1250-present and the British sector of the Western Front 1914-1918, injuries treatment and the trenches.

Paper 2 Period study and British depth study

Early Elizabethan England 1558-88

Superpower Relations and the Cold War 1941-1991

Paper 3 Modern depth study

Weimar and Nazi Germany 1918-1939

Studying GCSE History will help you to answer important questions such as:

- Why do wars happen?
- Why do we have a welfare system?
- How have we come to live in a multi-cultural society?

Learning about past events and the people who've influenced history will allow you to understand how the world got to the point it's at now and how it will continue to develop in the future.

Apart from studying a wide range of exciting historic periods, you'll learn a range of handy skills that will help you with A-levels and future work. These include:

- excellent communication and writing skills
- how to construct an argument
- research and problem skills
- investigation and problem-solving skills
- analytical and interpretation skills.

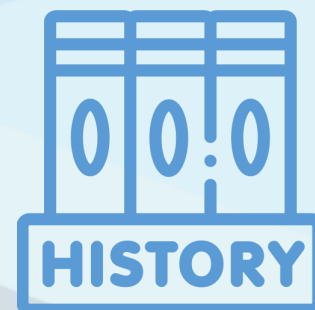
How will I be assessed?

The exam board will grade you using GCSE 9-1

Paper 1 examined 30% of total mark

Paper 2 examined 40% of total mark

Paper 3 30% of total mark



Why you should study this course:

If you're wondering 'Why study History?', the short answer is; History is a rich and immersive subject that helps us understand the modern world. It gives us the context behind everything from the formation of the United Nations to why tensions exist between nations across the globe, even ones that claim to be allies. The study of History allows us to understand the culture not only on home soil but in societies around the world as well.

Careers from this subject:

Civil Service, Journalism,
Education, Researcher, Medicine,
Law,

What can you study next: History, Law, Media Studies, Criminology

Can I study this course at **Waverley Sixth Form**?

Yes you can! We offer History, Law and Criminology





Geography (GCSE)

AQA

Ms Crawley

Topic list

Paper 1

Tectonic Hazards
Weather Hazards
Climate Change
Ecosystems
Tropical Rainforests
Hot Deserts
Coastal Landscapes
River Landscapes

Paper 2

The urban world
Urban change in the UK
Sustainable urban development
The changing UK economy
Development gap
Nigeria
Global resources

Paper 3

Field work
Geographical key skills

Here at Waverley School we have carefully designed our Geography curriculum to ensure students have a real interest in the world around them, aiming to inspire a passion for geography and an interest in the subject beyond their academic achievements, and for the rest of their lives. We aim to teach them to have a sense of awe and wonder at natural landscapes and processes. The GCSE course encourages pupils to think like geographers through the study of geographical themes, applied within the context of the UK and the wider world, and for the rest of their lives. Pupils will study in-depth the diverse and dynamic geography of the UK, gaining an appreciation of the changes to the country's geography and the processes which drive them. This includes the study of natural landscapes which defines the UK, the people, and the environmental challenges which it faces.

How will I be assessed?

The exam board will grade you using GCSE 9-1

Paper 1, 1 hour 30 minutes. 35% of GCSE

Paper 2, 1 hour 30 minutes, 35% of GCSE

Paper 3, 1 hour 30 minutes. 30% of GCSE



Why you should study this course:

A good qualification in Geography can lead to a great variety of employment possibilities with its combination of knowledge, decision making, analysis, cultural awareness, environmental awareness, bridging the gap between arts and science, practical use of ICT, and - last but not least - literacy and numeracy competence! It's also a life skill: we all need skills of map reading, knowledge of places and understanding of other cultures.

What can you study next: Banking, Corporate Sustainability, Meteorologist, Travel and Tourism

Careers from this subject:

Sustainability, Banking, Environmental Law, Geologist, Environmental Scientist, Civil Service, Teacher, Business

Can I study this course at **Waverley Sixth Form**?

Yes you can! We offer A-Level Geography





French (GCSE)

Edexcel

Mrs Swann

Topic list

Questions across all four language skills are set in common contexts, addressing a range of relevant contemporary and cultural themes. They are organised into five themes, each broken down into topics and sub-topics.

The five themes are:

- Identity and culture
- Local area, holiday and travel
- School
- Future aspirations, study and work
- International and global dimension.

The aims and objectives of this qualification are to enable students to:

- develop their ability to communicate confidently and coherently with native speakers in speech and writing, conveying what they want to say with increasing accuracy
- express and develop thoughts and ideas spontaneously and fluently
- listen to and understand clearly articulated, standard speech at near normal speed
- deepen their knowledge about how language works and enrich their vocabulary in order for them to increase their independent use and understanding of extended language in wide range of contexts
- acquire new knowledge, skills and ways of thinking through the ability to understand and
- respond to a rich range of authentic spoken and written material, adapted and abridged,
- develop awareness and understanding of the culture and identity of the countries and communities where the language is spoken

How will I be assessed?

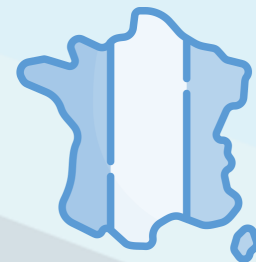
The exam board will grade you using GCSE 9-1

Paper 1: Listening and Understanding, Foundation 35 mins, Higher 45 mins, 25%

Paper 2: Speaking, Foundation 7-9 mins, Higher 10-12 mins, 25%

Paper 3: Reading and Understanding, Foundation 45 mins, Higher 60 mins, 25%

Paper 4: Writing, Foundation 1h 15 mins, Higher 1h 20 mins, 25%



Why you should study this course:

We are proud to live in a global society and a global community. Students who embrace languages at a younger age find themselves with extraordinary opportunities to work in careers that can take them across the world, to connect with people from different backgrounds, and explore different cultures. We also know that linguists achieve higher GCSE grades in their other subjects!

What can you study next: A-Level French

Careers from this subject:

Teacher, English as a Foreign Language Teacher, Lecturer, Translator, Interpreter, Travel & Tourism, International Business, Journalism

Can I study this course at **Waverley Sixth Form**?

Yes you can! We offer French A-Level.



Spanish (GCSE)

Edexcel

Mrs Swann

Popular
course!



Topic list

Questions across all four language skills are set in common contexts, addressing a range of relevant contemporary and cultural themes. They are organised into five themes, each broken down into topics and sub-topics.

The five themes are:

- Identity and culture
- Local area, holiday and travel
- School
- Future aspirations, study and work
- International and global dimension.

The aims and objectives of this qualification are to enable students to:

- develop their ability to communicate confidently and coherently with native speakers in speech and writing, conveying what they want to say with increasing accuracy
- express and develop thoughts and ideas spontaneously and fluently
- listen to and understand clearly articulated, standard speech at near normal speed
- deepen their knowledge about how language works and enrich their vocabulary in order for them to increase their independent use and understanding of extended language in a wide range of contexts
- acquire new knowledge, skills and ways of thinking through the ability to understand and respond to a rich range of authentic spoken and written material, adapted and abridged, as appropriate, including literary texts
- develop awareness and understanding of the culture and identity of the countries and communities where the language is spoken

How will I be assessed?

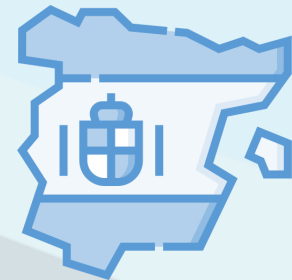
The exam board will grade you using GCSE 9-1

Paper 1: Listening and Understanding, Foundation 35 mins, Higher 45 mins, 25%

Paper 2: Speaking, Foundation 7-9 mins, Higher 10-12 mins, 25%

Paper 3: Reading and Understanding, Foundation 45 mins, Higher 60 mins, 25%

Paper 4: Writing, Foundation 1h 15 mins, Higher 1h 20 mins, 25%



Why you should study this course:

We are proud to live in a global society and a global community. Students who embrace languages at a younger age find themselves with extraordinary opportunities to work in careers that can take them across the world, to connect with people from different backgrounds, and explore different cultures. We also know that linguists achieve higher GCSE grades in their other subjects!

Careers from this subject:

Teacher, English as a Foreign Language Teacher, Lecturer, Translator, Interpreter, Travel & Tourism, International Business, Journalism

What can you study next: Spanish

Can I study this course at **Waverley Sixth Form**?

Not yet, but we hope to offer Spanish A-Level in the near future.

Urdu (GCSE)

Edexcel

Mrs Swann

Popular
course!

Topic list

Themes and topics

Questions across all four language skills are set in common contexts, addressing a range of relevant contemporary and cultural themes. They are organised into five themes, each broken down into topics and sub-topics.

The five themes are:

1. Identity and culture
2. Local area, holiday, travel
3. School
4. Future aspirations, study and work
5. International and global dimension

The course is assessed through three papers:

Paper 1: Listening and understanding in Urdu

Paper 2: Speaking in Urdu

Paper 3: Reading and understanding in Urdu

Paper 4: Writing in Urdu

The study of foreign languages not only broadens students' perspectives of the world, but also imparts a more profound understanding of their own cultures. Exposure to cultures with long histories builds a greater sense of the past within one's own culture as well.



How will I be assessed?

The exam board will grade you using GCSE 9-1

Paper 1 (25%):

Foundation tier: 35 minutes, including 5 minutes' reading time; 50 marks. Higher tier: 45 minutes, including 5 minutes' reading time; 50 marks

Paper 2 (25%): Internally conducted and externally assessed

Foundation tier: 7–9 minutes plus 12 minutes' preparation time; 70 marks. Higher tier: 10–12 minutes plus 12 minutes' preparation time; 70 marks

Paper 3 (25%):

Foundation tier: 50 minutes; 50 marks. Higher tier: 1 hour 5 minutes; 50 marks

Paper 4:

Foundation tier: 1 hour 20 minutes; 60 marks. Higher tier: 1 hour 25 minutes; 60 marks
25% of the total qualification

Why you should study this course:

The study of foreign languages also enhances listening skills and memory, increases analytical abilities, and builds aptitude in problem solving and working with abstract concepts. It has been shown to enhance the study of other subjects. Abilities in math and English increase, and creativity grows.

Careers from this subject:

Language skills can be used in almost any career, and particularly in businesses that trade internationally;
Jobs directly related to your language skills include:
Academic researcher
Interpreter
Political risk analyst

What can you study next: Urdu

Can I study this course at **Waverley Sixth Form?**

Yes you can! We offer Urdu A-Level



Art and Design (GCSE)

OCR

Mr Poole



Topic list

Students will study a range of processes and techniques based on natural forms. They will be taught how to use a range of media and materials and will be guided through the following Assessment Objectives:

AO1 Develop ideas through investigations, demonstrating critical understanding of sources.

AO2 Refine work by exploring ideas, selecting and experimenting with appropriate media, materials, techniques and processes.

AO3 Record ideas, observations and insights relevant to intentions as work progresses.

AO4 Present a personal and meaningful response that realises intentions and demonstrates understanding of visual language.

How will I be assessed?

The exam board will grade you using GCSE 9-1 grades.

Coursework: 60% (Externally moderated)

Exam (10 Hours): 40% (Externally moderated)



Why you should study this course:

You would choose to study Art and Design if you wanted to enter any creative field. Just about any job where creative skills were needed. The UK has changed from being a nation of manufacturing industries to one of designing the products which are made elsewhere. Every stage of the designing process will need a person with a creative background, and that means Art.

What can you study next: Art and Design, Textiles, Graphic Design, Fine Art, Photography, Ceramic Design, 3D design...

Careers from this subject:

Fashion designer, fashion consultant, dressmaker, animator, concept artist, web designer, 3D modeller, film maker, camera operator set designer, photographer, photo journalist, photography, film editor, visual effects designer, YouTube content creator, florist, curator, stylist, picture framer, gallery owner,

Can I study this subject at **Waverley Sixth Form**?

Yes you can! We now offer Art & Design at A-Level.



Photography (GCSE)

OCR

Mrs Kaur



Topic list

Photography is art and design but using Cameras and digital manipulation. Students opting for photography gain all the benefits of studying art and design through a lens based creative process . You will learn all about how to control and manipulate photographic images for effect. This will include how to take photographs (including how to use the controls on a SLR), image processing, including Industry standard software, Adobe Photoshop. Photography is all about 'learning by doing'. They will be taught how to use a range of media and materials and will be guided through the following Assessment Objectives:

AO1 Develop ideas through investigations, demonstrating critical understanding of sources.

AO2 Refine work by exploring ideas, selecting and experimenting with appropriate media, materials, techniques and processes.

AO3 Record ideas, observations and insights relevant to intentions as work progresses.

AO4 Present a personal and meaningful response that realises intentions and demonstrates understanding of visual language.

How will I be assessed?

The OCR exam board will grade you using GCSE 9-1 grades.

Coursework: 60% (Externally moderated)

Mock Exam(10 Hours)

Exam (10 Hours): 40% (Externally moderated)



Why you should study this course:

GCSE Photography is extremely interesting and offers a unique opportunity to explore a wide range of skills and techniques, using a range of photography methods and creative techniques. This will include digital and hand manipulation methods, drawing and experimental processes when developing and producing work. It must be emphasised that spending time producing work outside lessons, including attendance in extracurricular sessions, is an integral part of the course. Students should be passionate about this subject.

What can you study next: Art and Design, Textiles, Graphic Design, Fine Art, Photography, Ceramic Design, 3D design. Professional photography,

Careers from this subject:

YouTube content creator, Film/video editor, Press photographer, Television camera operator, Graphic designer, Web designer, Wedding photographer, portrait photographer, commercial photographer, Photojournalist/news photographer, Teacher, Film maker, Camera operator, Photo journalist, Film editor, Visual effects designer, You could even become a photographer for the police in a forensics team or a traveling photographer in the Navy, Army or Air force. The jobs are endless.

Can I study this subject at **Waverley Sixth Form**?

Not yet, but we hope to offer A-Level in the near future.



Business Studies (GCSE)

Edexcel

Mr Khan



Topic list

The aims and objectives of this qualification are to enable students to know and understand business concepts, business terminology, business objectives, the integrated nature of business activity and the impact of business on individuals and wider society. To apply knowledge and understanding to contemporary business issues and to different types and sizes of businesses in local, national and global contexts. Investigate and analyse real business opportunities and issues to construct well-argued, well-evidenced, balanced and structured arguments, demonstrating their depth and breadth of understanding of business. To develop and apply quantitative skills relevant to business, including using and interpreting data.

What will I study?

You will study the following topics based around the two end of year 11 exams: Paper 1 - Enterprise and entrepreneurship, spotting a business opportunity, putting a business idea into practice, making the business effective and understanding external influences on business. Paper 2 - Growing the business, making marketing decisions, making operational decisions, making financial decisions and making human resource decisions.

What skills are required?

This qualification builds on the analytical skills needed to spot business opportunities and widens students' perspective of money management and the external environment including interest and exchange rates. The course offers a unique set of life skills that students can use on their path to adult life. Students should be encouraged to keep up-to-date with business news so that they can use real life stories to further their knowledge.

How will I be assessed?

The exam board will grade you using Pass, Merit, Distinction

Students will sit two externally set exams in year 11

Paper 1 - Investigating small business – Focuses on enterprise, marketing, people management, and finance in small businesses - 50% of the final grade

Paper 2 - Building a business – Covers growing businesses, operations, finance, and the impact of global markets - 50% of the final grade



Why you should study this course:

Can lead to further study at Level 3, such as A level Business (which we offer in our Sixth Form), which prepares you to enter employment or apprenticeships, or to move on to higher education by studying a degree in the business sector.

Careers from this subject:

A qualification in Business & Enterprise is suitable for careers in business management, accounting, finance, production, administration and marketing as well as providing students with the knowledge and skills to be able to set up and run their own enterprise.

What can you study next: Business or Accountancy.

Can I study this course at **Waverley Sixth Form?**

Yes you can! We offer A-Level Business Studies





Computer Science (GCSE)

Edexcel

Mr Taj



Popular
course!

Topic list

Paper 1:

In order to become proficient computer scientists, it is essential that students have knowledge and understanding of the field's fundamental principles and concepts.

Topic 1: Computational thinking

Students are expected to develop a set of computational thinking skills that enable them to design, implement and analyse algorithms for solving problems.

Topic 2: Data

Students are expected to learn how different types of data are represented in a computer.

Topic 3: Computers

Students are expected to learn about the hardware and software components that make up a computer system.

Topic 4: Networks

Students are expected to learn and understand the key principles behind the organisation of computer networks.

Topic 5: Issues and impact

Students are expected to learn about the influence of digital technology and recognise some of the issues and the impact on wider society associated with its use.

Paper 2:

Topic 6: Problem solving with programming

Students should be competent at designing, reading, writing and debugging programs. They must be able to apply their skills to solve real problems and produce readable, robust programs.

How will I be assessed?

The exam board will grade you using GCSE 9-1

Paper 1: Principles of Computer Science:

Written examination: 1 hour and 30 minutes 50% of the qualification (75 marks) This paper consists of five compulsory questions, each one focuses on one topic area. The questions consist of multiple-choice, short, medium and extended open responses, tabular and diagrammatic items.

Component 2: Application of Computational Thinking

Onscreen examination: 2 hours 50% of the qualification (75 marks) This practical paper requires students to design, write, test and refine programs in order to solve problems. Students will complete the assessment onscreen using Python.

Why you should study this course:

The Computer Science field is one of the most fastest growing and highest paying career paths in the world. This exciting course is an engaging qualification that will equip you with the knowledge and practical skills to thrive in the fast-changing world of Computer Science. This qualification provides a practical approach to developing computational skills such as understanding how computers work, to creating programs using code.

Careers from this subject:

Programmer
Systems Analyst
Cyber Security Consultant
Network Manager
Web Developer
Software Tester
Data Scientist
Software Engineer

What can you study next: A-Level Computer Science, BTEC Level 3 IT

Can I study this subject at **Waverley Sixth Form?**

Yes you can! We offer BTEC Level 3 IT and Computer Science A-Level

Digital Information Technology (BTEC)

Pearson

Mr Taj



Topic list

Students taking this qualification will study three components, covering the following content areas:

User Interface and User Experience (UI/UX), are design elements that are intertwined and are critical aspects of any software, app, or website. Understanding how UI and UX is planned and developed can introduce you to concepts of human/computer interactions (HCI), human psychology, and marketing and design principles. You will develop an understanding of UI UX.

IT project management, which is often implemented to introduce technological improvements by rolling out change projects. Understanding how projects are structured is of vital importance. This qualification will enable you to use project-planning tools, models and techniques within a digital context.

Cloud Computing is an important computing concept to grasp in today's web based connected world. You will understand how computers are networked online and use web based services to improve data security and manage the costs of handling large volumes of data.

How will I be assessed?

The exam board will grade you using Pass, Merit and Distinction.

Component 1: Internal assessment, 30%

Component 2: Internal assessment, 30%

Component 3: External examination, 40%

Perfect for creative minds!

Why you should study this course:

Once you have completed the qualification, you will have developed a practical understanding of the digital sector. You will have built useful skills, you will have developed a good understanding of whether the IT sector is for you, and if so, which part of it you might want to study further.

Careers from this subject:

The careers that are available within the Media industry are vast and wide ranging from TV and Film, through to Web content creator and Marketing.

What can you study next: BTEC Level 3 Information Technology, A level Computer Science.

Can I study this subject at **Waverley Sixth Form?**

Yes you can! We offer BTEC Level 3 IT and Computer Science A-Level

Drama (GCSE)

Eduqas

Mr Depper



Topic list

Component 1

Devised Performance.

Devised performance (Students create a performance in a small group and can create log books to assist with the work (coursework element))

Component 2

Scripted Performance.

Learners explore a set text and learn 2 opposite extracts of the text for a performance.

Component 3

Live Theatre Review & Study of set text.

We visit a theatre to watch a live show which will be reviews in your examination and explore a contemporary text.

How will I be assessed?

The exam board will grade you using GCSE 9-1

Assessed in 3 different Components.

Component 1 40%
(Devised performance & log book)

Component 2 20%
(Scripted performance)

Component 3 40%
(Theatre review and text analysis)



Why you should study this course:

In a society in which effective communication is vital, the study of drama develops verbal and nonverbal, individual and group communication skills which are skills for life.

Drama enhances learners wellbeing and everyday life. We explore and foster their artistic and creative abilities and gives them a better understanding of themselves and their world.

Through an exploration and investigation of different drama contexts relating to identity, societies, cultures, ideologies, gender, time and change, students are able to become more critically reflective members of the community we live in.

Careers from this subject:

Theatre Arts, Performing Arts,
Drama

What can you study next: Theatre Arts, Performing Arts, Drama

Can I study this subject at **Waverley Sixth Form?**

Not yet. This is a brand new qualification for Waverley School, but we hope to offer it for A-Level in the future.

Health and Social Care (BTEC)

Pearson

Ms Green



Topic list

Year 1

Component 1: Human Lifespan Development:

Learning outcome A: Understand human growth and development across life stages and the factors that affect it:

Learning outcome B: Understand how individuals deal with life events.

Year 2

Component 2: Health and Social Care Services and Values

Learning outcome A: Understand the different types of health and social care services and barriers to accessing the.

Learning outcome B: Understand the skills, attributes and values required to give care.

Component 3: Health and Wellbeing

A - Factors that affect health and wellbeing

B - Interpreting health indicators

C1 - Person-centred approach

Popular
course!

How will I be assessed?

The exam board will grade you using Pass, Merit, Distinction

Component 1: Human Lifespan Development - Pearson Set assignment (PSA) - Written task

Component 2: Health and Social Care Services and Values - Pearson Set assignment (PSA) - Written task

Component 3: Health and Wellbeing- Written examination, 2 hrs



Why you should study this course:

Studying this course gives student's the opportunity to explore and gain knowledge into the health and social care sectors allowing numerous avenues to open up. It develops learners with key learning skills such as researching, critical thinking and managing.

Careers from this subject:

Health and Social care sectors such as Nursing, Teaching, Social Worker, Physiotherapists etc.

What can you study next: Health and Social Care, Psychology,

Can I study this course at **Waverley Sixth Form?**

Yes you can! We offer BTEC Health and Social Care at Level 3



Performing Arts (Music) (Vocational) EDUQAS



Mrs Harding

Topic list

Unit 1 Performing

Students will study the skills and techniques needed to produce a successful instrumental solo or group performance of an existing piece(s) of music.

Unit 2 Creating

Students will learn how to compose and refine your own original piece of music using music Garageband/Cubase software

Unit 3 Performing Arts in Practice

Students will learn about areas of the performing arts industry that need to be considered when responding to a commission, and will consider these when coming up and pitching their own idea.



How will I be assessed?

Unit 1: Performing Internal
Controlled assessment 10 hours
30% of qualification

Unit 2: Creating/ Composing
music Internal Controlled
assessment 10 hours 30% of
qualification

Unit 3: Performing Arts in
Practice External assessment
20 hours 40% of qualification



Why you should study this course:

This Level 2 Vocational Award in Performing Arts will provide students with opportunities to develop a range of musical skills in performing and composing music. Students will work on improvement of their technique, accuracy, expressiveness in performance, build their confidence and creativity, compose music using software, explore various music styles and genres. The students will learn how to promote their own performances. Students will develop their organisation, time management, self-discipline and problem solving skills.

Careers from this subject:

Composer, Music Therapist,
Musician, Teacher, Community
arts Worker, Arts Administrator.

What can you study next: Level 3 Performing Arts Music
BTEC Music

Can I study this course at **Waverley Sixth Form?**

Not yet. This is a brand new course for Waverley School!

Sociology (GCSE)

AQA

Ms Green



Topic list

Sociology is the study of how society is organised and how we experience life. Sociologists have conducted much ground-breaking research in major social issues such as poverty and crime. If you become a Sociology student you will not be provided with quick answers but what you will discover is how to think about these issues for yourself.

Paper: 1 - Families, Education. *With Sociological: Approaches, Research Methods.

Paper: 2 - Crime & Deviance, Social Stratification. *With Sociological: Approaches, Research Methods.

For each topic area students are asked to critically evaluate and compare and contrast theories or explanations, including the key features of each theory or explanation in the context of a specific topic and area of sociology.

Students are expected to demonstrate knowledge and understanding of key sociological theories by reading and responding to extracts which illustrate the different views of sociologists. They should be able to critically analyse and evaluate how the issues have been interpreted by these sociologists.

For each topic area students are expected to demonstrate an understanding of relevant methods and methodological issues, for example the use of official statistics, qualitative and quantitative approaches and the use of mixed methods.

They will explore and debate contemporary social issues in order to be able to challenge everyday understandings of social phenomena from a sociological perspective

How will I be assessed?

Paper One

- The sociology of families
- The sociology of education
- Relevant areas of social theory and methodology
- Written exam: 1 hour 45 minutes
- 100 marks
- 50% of GCSE

Paper Two

- The sociology of crime and deviance
- The sociology of social stratification
- Relevant areas of social theory and methodology
- Written exam: 1 hour 45 minutes
- 100 marks
- 50% of GCSE

Students will be required to draw on knowledge and understanding of the entire course of study to show a deeper understanding of these topics.

Why you should study this course:

Many students study Sociology for the personal enrichment it brings them, broadening their minds and enabling them to see their world in new and interesting ways. If you choose to study Sociology you will gain a range of very valuable skills; for example, you will learn how to work independently; you will learn how to find information, extract what is important from it and turn it into an argument. With newly acquired skills and insights into the workings of society it is not surprising that a wide range of employers see a Sociology qualification as being highly relevant.

What can you study next: Psychology, Health & Social Care, Law and Criminology.

Careers from this subject:

Social Worker, Sociologist, Teacher, Lecturer, Community Development Worker, Civil Servant, Police Officer, Family Support Worker.

Can I study this course at **Waverley Sixth Form**?

Yes you can! We offer Sociology at A-Level.



Sports Studies (Vocational) OCR



Mr Horsfield

Topic list

- Contemporary issues in sport
- Performance and leadership in sports activities
- Sport and the Media
- Increasing awareness of outdoor and adventurous activities.

During the course, students will have the opportunity to learn through classroom based lessons, observations, written tasks and assessments, as well as engaging in practical activities. The course will help to encourage a healthy lifestyle and gain an understanding of how sport and society impact each other.



How will I be assessed?

The exam board will grade you using Pass, Merit, Distinction.

Contemporary issues in sport (Exam) (48 guided learning hours)

Performance and leadership and sports activities (48 guided learning hours)

Sports and the media (24 guided learning hours) (coursework)

Why you should study this course:

Sports studies is a challenging, exciting and enjoyable course to study, the course gives students the opportunity to unpick the theory side of sport as well as their own practical abilities. If students looking for a career in education, leisure and tourism, sport, public services or armed forces then this would be the course for them.

Careers from this subject:

Personal trainer
Outdoor activity Instructor
Leisure team member
Apprenticeship in communicator
activator coach

What can you study next: Sports Studies, Psychology, Sociology

Can I study this course at **Waverley Sixth Form?**

Yes you can! We offer a brand new Sports Studies qualification.



Textiles (GCSE)

OCR

Mr Poole



Topic list

Constructed textiles, digital textiles, dyed fabrics, printed fabrics, fashion design, installed textiles, soft furnishings, stitched and/or embellished textiles.

AO1 Develop ideas through investigations, demonstrating critical understanding of sources.

AO2 Refine work by exploring ideas, selecting and experimenting with appropriate media, materials, techniques and processes.

AO3 Record ideas, observations and insights relevant to intentions as work progresses.

AO4 Present a personal and meaningful response

Learners must explore, acquire and develop skills, knowledge and understanding through the application of techniques and processes specific to their chosen area(s) of study of Textile Design.

Learners must explore practical and relevant critical and contextual sources such as the work of historical and contemporary textile designers and the different purposes, intentions and functions of textile design as appropriate to their own work.

Learners must demonstrate the knowledge, skills and understanding through area(s) of study relevant to Textile Design.

How will I be assessed?

The exam board will grade you using GCSE 9-1

Coursework: 60% (externally moderated)

Exam (10 Hours): 40% (externally moderated)



Why you should study this course:

Studying Art Textiles at GCSE offers an opportunity for learners to extend their creative experience and personal response, as well as developing imagination and critical and reflective thinking. It would suit any creative person and be beneficial to anybody thinking of studying fashion or Textiles after secondary school.

Careers from this subject:

Clothing/textile technologist, colour technologist, illustrator, Interior and spatial designer, fashion designer, textile designer, costume designer, (TV and Film), costume designer (Stage), teacher, embroiderer, dressmaker, fashion consultant, textile/fabric designer, patternmaker, accessory designer, fibre artist.

What can you study next: Art, Textiles, Fashion, and Fashion Design.

Can I study this subject at **Waverley Sixth Form**?

Not yet, however you *could* study Art & Design at A-Level.

Psychology (GCSE)

AQA

Ms Green



Topic list

Psychology is the scientific study of the mind and behaviour. It explores how people think, feel, and act both as individuals and in groups, by examining mental processes. Psychologists are expected to provide evidence from empirical evidence.

Paper: 1 - Cognition and Behaviour—Memory, Perception, Development, Research methods

Paper: 2 - Social Context and Behaviour— Social Influence, Language, thought and communication, Brain and neuropsychology, Psychological problems

Students are expected to demonstrate knowledge and understanding of key psychological ideas, processes, procedures and theories. They should be able to critically analyse and evaluate ideas, information, processes and procedures drawing conclusions based on their reasoning and synthesis of skills.

For each topic area students are asked to evaluate therapies and treatments, demonstrate the contribution of psychology to an understanding of diversity.

For each topic area students are expected to demonstrate an understanding of relevant research methods and methodological issues, for example the use of official statistics, qualitative and quantitative approaches and the use of mixed methods.

How will I be assessed?

Paper One

- Memory
- Perception
- Development
- Research Methods

Written exam: 1 hour 45 minutes
100 marks
50% of GCSE

Paper Two

- Social influence
- Language, thought and communication
- Brain and neuropsychology
- Psychological Problems

Written exam: 1 hour 45 minutes
100 marks
50% of GCSE

Students will be required to draw on knowledge and understanding of the entire course of study to show a deeper understanding of these topics.

Why you should study this course:

Studying Psychology allows you to gain a deeper self and social understanding, whilst balancing analytical science and empathetic human insight. It helps develop critical thinking, data literacy and active listening and has a broad career versatility. If you choose to study Psychology you will gain a range of very valuable skills; for example, you will learn how to work independently; you will learn critical thinking that allows you to extract what is important from a topic and turn it into an argument.

Careers from this subject:

Clinical Psychologist, Forensic Psychologist, Educational Psychologist, Mental Health Worker, Social Worker, Counsellor, Human Resources, Data Analyst, Probation.

What can you study next: Psychology, Biology, Mathematics, Chemistry, Computing, Law and Criminology.

Can I study this course at **Waverley Sixth Form?**

Yes you can! We offer Psychology at A-Level.



Child Development (BTEC)

Pearson

Ms Green



Topic list

Everyone taking this qualification will study three components, covering the following content areas:

Component 1: Children's Growth and Development.

You will gain knowledge of the principles of growth and development, including expected development milestones, for different age ranges across all five areas of development; physical, intellectual and cognitive, communication and language, social and emotional. You will explore how different factors can positively or negatively impact different areas of a child's expected development.

Component 2: Learning Through Play.

You will explore different stages and types of play and how play activities can support and promote children's development and learning across the five areas of development between the ages of birth and five years old. You will investigate the different learning needs of children at different ages and stages and learn how to plan and structure play activities to meet those learning needs and encourage and influence learning, while considering the role of adults in promoting children's learning and development through play both at home and in the community.

Component 3: Supporting Children to Play, Learning and Develop

You will develop an understanding of how children's learning and development can be affected by their individual circumstances. You will investigate the importance of inclusion and the role of an adult in keeping children safe when engaging in play activities and how the environment and play activities can be adapted to support the learning and development of all children.

How will I be assessed?

The exam board will grade you using Pass, Merit, Distinction or Distinction *

Component 1 — internal assessment with 3 tasks

Component 2 — Internal assessment with 3 tasks

Component 3 — External exam. Exam (10 Hours):

Why you should study this course:

This course will give you the opportunity to develop knowledge and technical skills in a practical learning environment. You will also develop key skills such as research and written communication skills as you plan different types of play activities to encourage children's learning and development and investigate how to adapt them to meet children's individual circumstances.

Careers from this subject:

Early Years Teacher, Primary School Teacher, Teaching Assistant, Childminder, Play Therapist, Paediatric Nurse, Health Visitor, Social Worker, Family Support Worker, Youth Worker

What can you study next: Child Development, Health and Social, SociologyCare

Can I study this subject at **Waverley Sixth Form?**

Yes you can! We will be offering Child Development at Level 3