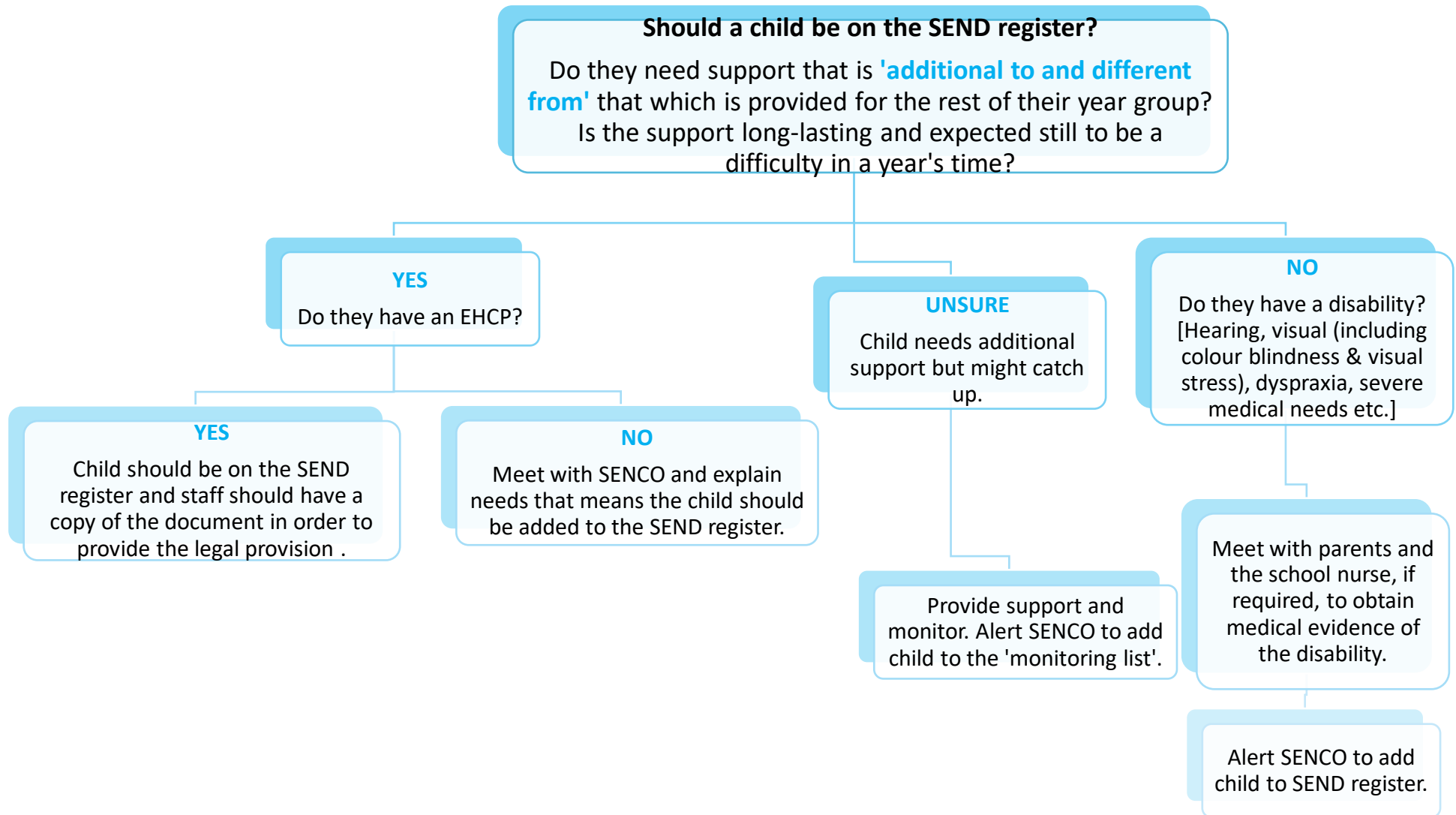




Waverley School
Primary Phase: SEND Register



*Most children who received Speech & Language support for speech sounds difficulties (when a child has difficulty pronouncing sounds in words) are likely to have the issue resolved with therapy and therefore do not need to go on the register.

*Those with language difficulties (trouble understanding or being understood through communication) tend to have a longer lasting difficulty and therefore might need to be added to the SEND Register.